



# **E<sup>3</sup>.series 2025**

## **Update Information**



**Technical Inquiries**

Please ask the responsible contact person in our support department.

E-mail: [e3-support@de.zuken.com](mailto:e3-support@de.zuken.com)

Tel.: +49 7305/9309-60

**Note:**

Zuken is not responsible for any errors, which may appear in this documentation. Liability, due to direct and indirect losses resulting from the delivery or use of this documentation, is excluded to the extent permitted by law. This documentation contains copyrighted information. All rights, especially those pertaining to the duplication and distribution as well as the translation, are reserved. This documentation, whether wholly or in part, may not be reproduced in any form (photocopy, microfilm, etc.), or processed, duplicated or distributed using an electronic system without Zuken's prior written consent.

**Contact**

Zuken E3 GmbH

Laemmerweg 55

D-89079 Ulm/Einsingen

Phone : +49 7305 9309-0

Fax: +49 7305 9309-99

Web: <http://www.zuken.com>

E-mail: [e3-info@de.zuken.com](mailto:e3-info@de.zuken.com)

## E<sup>3</sup>.series 2025 – Update Information

### Installation

Before installing, we recommend you make a backup of your current installation (at least of the data and the databases).

The installation of E<sup>3</sup>.series 2025 is started using SETUP.EXE.

The 2025 version is only available as a 64-bit version.

If you have previously worked with a 32-bit version of E<sup>3</sup>.series, the data and databases are completely compatible, so that no conversions are necessary here.

Only the previous database links to the Access databases no longer work. Links to the 64-bit database drivers must be created here.

The best combination with the Office products is when the 64-bit version of Microsoft Office is also used.

If you continue to use the 32-bit version of Office, please read the information in the file "Access\_Driver.pdf" file located in the DVD root directory.

The Version can be installed in addition to any existing E<sup>3</sup>.series versions. The default directory is:

\Program Files\Zuken\E3.series\_2025

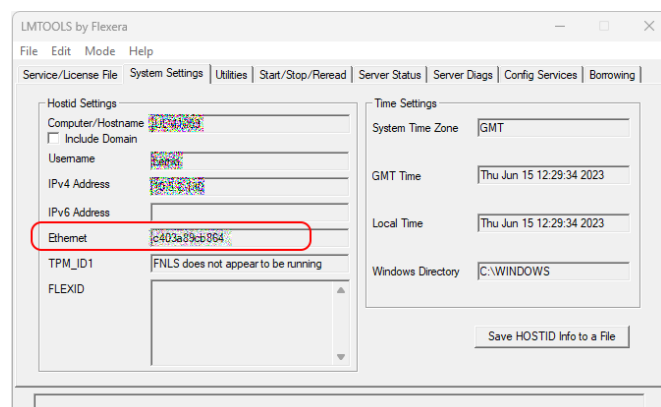
Therefore, this version can also be used alongside existing versions of E<sup>3</sup>.series.

Example databases, example projects and files which can be changed are installed in the standard directory „C:\Users\Public\Documents\Zuken\E3.series\_2025“ which can be changed during the installation.

### Licensing from E<sup>3</sup>.series on MAC-Id

Since E<sup>3</sup>.series 2023 we have switched to a new version of FlexNet. This no longer recognizes network cards that are connected to the computer via USB (for security reasons). If your previous license was issued to such a network address, the new license should now be issued to a local network card.

The easiest way to check which network addresses are valid is to use the LMTOOLS program (located in the directory "\Program Files\Zuken\E3.series\_2023\FLEXNET") to check in the "System Settings" tab, which addresses are listed here



## New files for the license server (floating licenses)

Since E3.series 2023 we have changed to a new version of FlexNet.

If you already have a license server running for E3.series version 2022, you have to replace the two files "zuken.exe" and "lmgrd.exe" on the license server with the new files of version 2023, which are located in the directory

"\Program Files\Zuken\E3.series\_2025\FLEXNET")

E3.series 2022 also runs with the new files of the license server.

1. stop the license server
2. replace the two files with the new files
3. start license server again

## Using Existing Workspaces

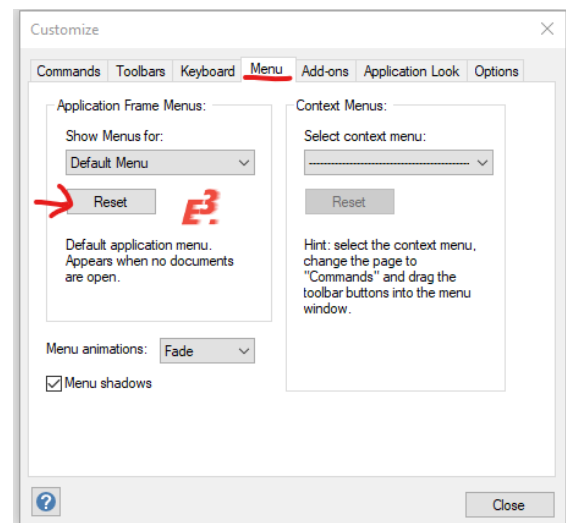
If you update from version 2020 or earlier to version 2025, adjustments in the working environment (arrangement of windows, structure of toolbars, added own programs, hiding of commands, assignment of keys to commands, ...) cannot be taken over from one of these versions due to the changed software component for the user interface.

These assignments must be created again (manually) and then saved in the working environment.

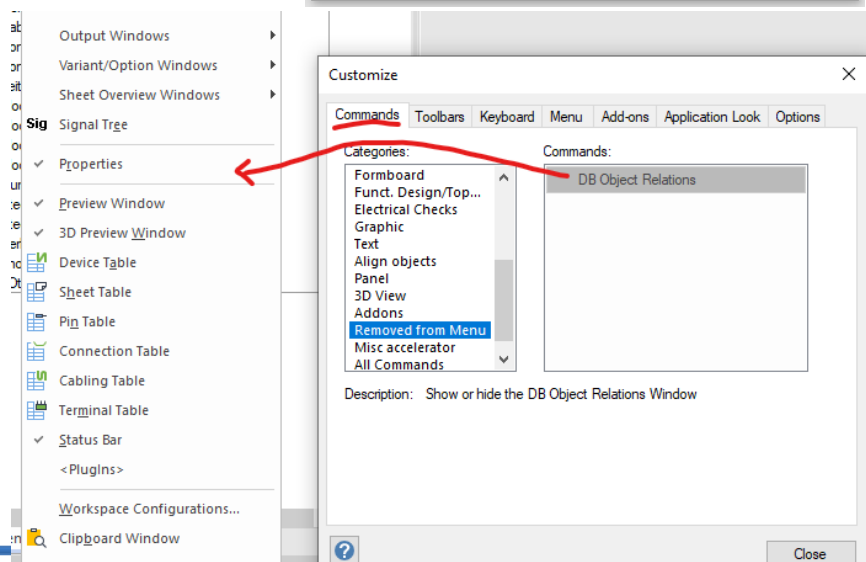
If an update from the version 2021 takes place, the working environment can be taken over as usual.

However, a new command that can be used to show a window with the dependencies of the database objects will then not be displayed.

This command can be added either by resetting the menu commands (but then adjustments in the menus are undone),



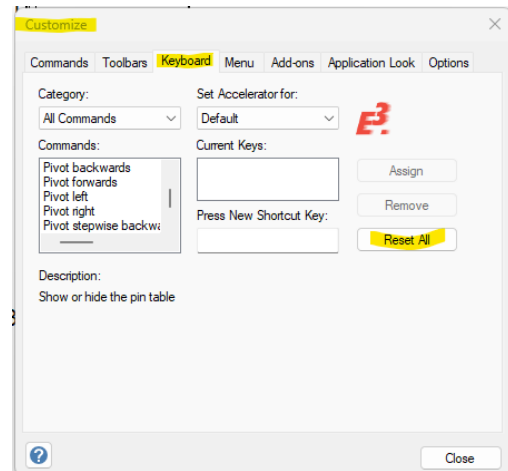
or the command can be dragged manually from the "Removed from Menu" category to the desired location in the menu.



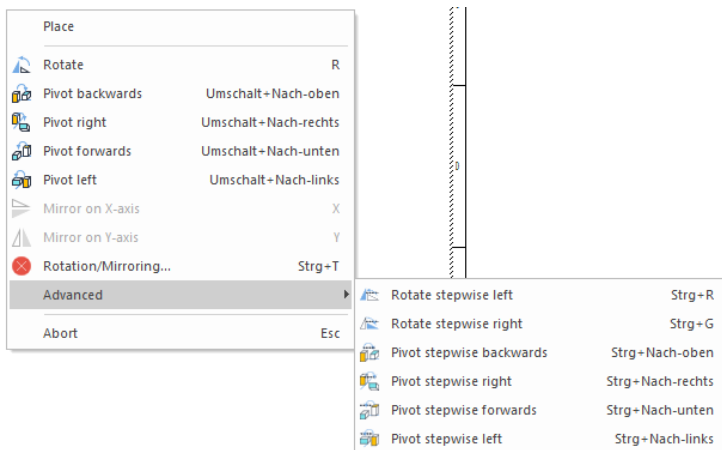
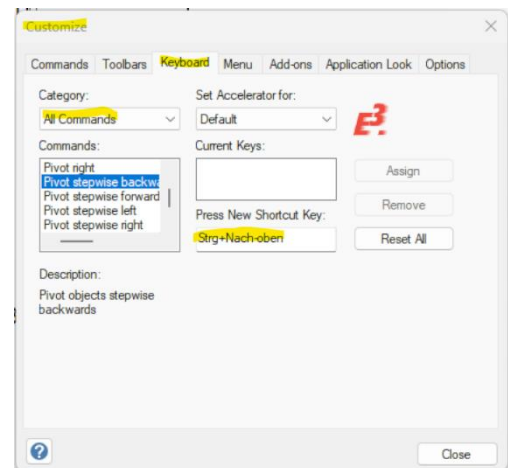
If an update from the version 2022 takes place, the working environment can be taken over as usual.

However, the key combinations for the new command to tilt a component in angular steps in the panel are then not assigned.

These keys can be added either by resetting the keyboard commands (but then own adjustments in the key assignments are undone),



or the keys can be assigned manually to the commands.



## Databases

With this version, a new default database has been installed. Existing databases are not overwritten. The new database contains new components and symbols.

## Using an Existing Component/Symbol Database

Databases of previous E<sup>3</sup>.series versions will be converted to the updated data structures.

Due to enhancements to the database, if an existing component database is configured for use with E<sup>3</sup>.series Version 2025, it is converted upon first opening. Therefore, the converted database can **no** longer be used with older E<sup>3</sup>.series versions.

For all users to be able to access the new tables, this conversion should be run with the user 'sa' (valid for an SQL database) or 'system' (valid for ORACLE).

The converted database can then **NO** longer be used in older E<sup>3</sup>.series versions (2022 and earlier).

## SingleUser Projects

Existing projects are automatically converted when opening with the new version. As long as the file has not been saved using the new version, it can still be opened with an older version. Only after saving a project with E<sup>3</sup>.series Version 2025 can a project no longer be opened using an earlier version.

## Additional Tools

The current versions of the additional programs 'E3.series AdditionalTools' can be found in the **Zuken Global Support (ZGS)** download area.

These tools offer additional helpful functions.

These programs have to be installed separately. The existing program will be updated automatically if the program had been installed already. The programs are working with older E<sup>3</sup>.series versions and with version 2025 in parallel.

The directory of the tools contains the SETUP/MSI program and the documentation of the additional tool. The tool can be easily integrated into the E<sup>3</sup>.series user interface after the installation by using the script „BuildToolsMenu.vbs” in the sub-folder “Scripts”

## Multi-User Installation

Independent of using the SETUP.EXE for the installation you have to install the MultiUser Server and MultiUser Admin-Tool separately.

For MultiUser environment please use the files in the directory '\Mu\_Setup' of the installation media.

Existing Version 2014 to 2023 multi-user projects can be opened with Version 2025. They are converted directly upon opening, which may take some time and can no longer be opened with Version 2014 to 2023.

That's why we recommend installing Version 2025 multi-user projects in parallel to the existing version, so that it's also possible to still access these project with E<sup>3</sup>.series Version 2014 to 2023.

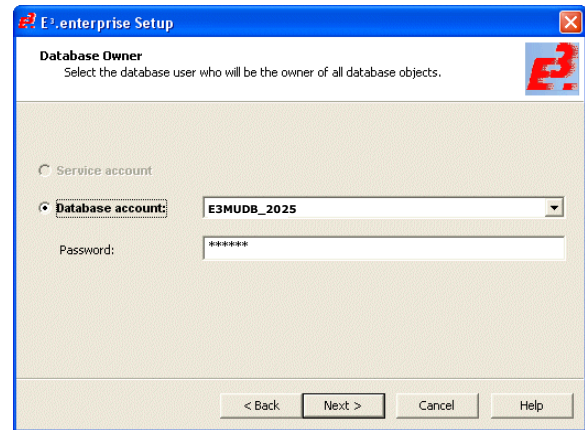
To transfer drawings to Version 2025, the projects must be saved as SingleUser with their original version and then opened in the MultiUser environment with Version 2025.

To be able to use the multi-user databases in parallel, a new SQL Server Process must be created for the Microsoft SQL-Server and a new database schema for ORACLE. The E3 Server Process must then access the new database or the new database schema.

**ORACLE:**

When setting up the E3-MU Server, a new name must be specified for the Database user.

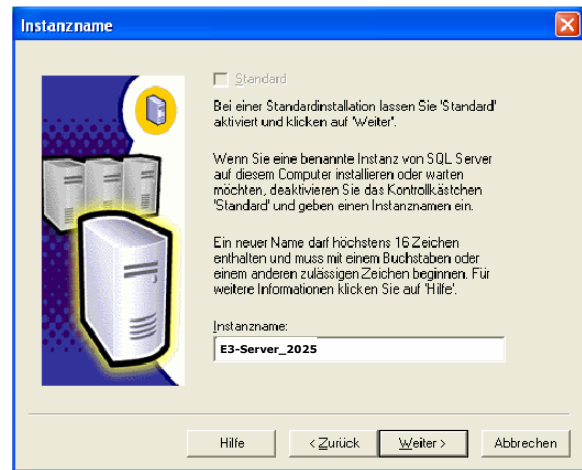
Thus a new database schema is created and both E3.series versions can work simultaneously in the multi-user environment.



**Microsoft-SQL-Server:**

First, a new instance of the SQL Server processes must be installed.

Enter a new instance name, which must be used with the set up installation of the E3-MU Server.



The rest of the installation takes place as described in the Installation description.

## Some information about software security in version E<sup>3</sup>.series 2025.

We want to give you some important information about a new capability in the E<sup>3</sup>.series 2012 to 2025 release, CodeArmor. As you know, there is an increased effort across all software industries to prevent software piracy. CodeArmor has been implemented to help you manage your license compliance and to inhibit piracy of our software.

As implemented in E<sup>3</sup>.series, CodeArmor only invokes when an executable is modified or when the license software has been cracked. When such a case is detected, a small amount of data is sent to a secure server (located in the United Kingdom) to which only a limited number of authorized Zuken employees have access. The data sent consists of license code, internal version, email domain, MAC address, and DHCP IP address. Be assured that no personal information or company intellectual property is detected or transmitted.

The data is kept secure and private. In the unlikely event that you appear in the report, Zuken will discretely contact you to inform you of the licensing violation and work with you to resolve the situation.

For software running legally, this feature is never invoked and no data is sent at any time.

At this time, CodeArmor is only implemented in E<sup>3</sup>.series 2012 to 2025. We are considering implementation in other Zuken products in the future and will notify you when further developments occur.





## Americas

### North America

Zuken USA Inc.  
Westford, MA 01886, USA  
Tel: +1 978 692 4900

### Asia

#### Japan

Zuken (World Wide Head Office)  
Yokohama, Kanagawa 224-8585, Japan  
Tel: +81 45 942 1511

#### China

CIM-TEAM Software Technology Co., Ltd.  
Changning District, Shanghai,  
China, 200336  
Tel: +86-21-52280180

#### Korea

Zuken Korea Inc.  
Seoul 135-283, Korea  
Tel: +82 2 5648031

#### Singapore

Zuken Singapore Pte Ltd.  
#22-05 Gateway East, Singapore 189721  
Tel: +65 6392 5855

#### Taiwan

Zuken Taiwan Inc.  
Taipei 110, Taiwan  
Tel: +886 2 7718 1116



## Europe

### Germany

Zuken GmbH (European HQ)  
D-85399 Hallbergmoos, Germany  
Tel: +49 89 607969 00

Zuken E3 GmbH  
D-89079 Ulm, Germany  
Tel: +49 7305 9309 0

Zuken E3 GmbH  
D-30659 Hannover, Germany  
Tel: +49 511 8595 9489

### Switzerland

Zuken E3 GmbH  
CH-5504 Othmarsingen, Switzerland  
Tel: +41 56 437 08 90

### United Kingdom

Zuken UK Ltd.  
Bristol, BS32 4RF, UK  
Tel: +44 1454 207 801

### France

Zuken S.A.  
#91974 Les Ulis Cédex, France  
Tel: +33 1 69 29 48 00

### Italy

Zuken S.r.l.  
20090 Milanofiori Assago, Milan, Italy  
Tel: +39 02 575 921

### Netherlands

Zuken GmbH  
NL-6075 HA Herkenbosch, The Netherlands  
Tel: +31 475 520 998